

# Innovative Diagnostic Imaging Solution for Select Siemens® 3T Systems



## Encompass™ Coil

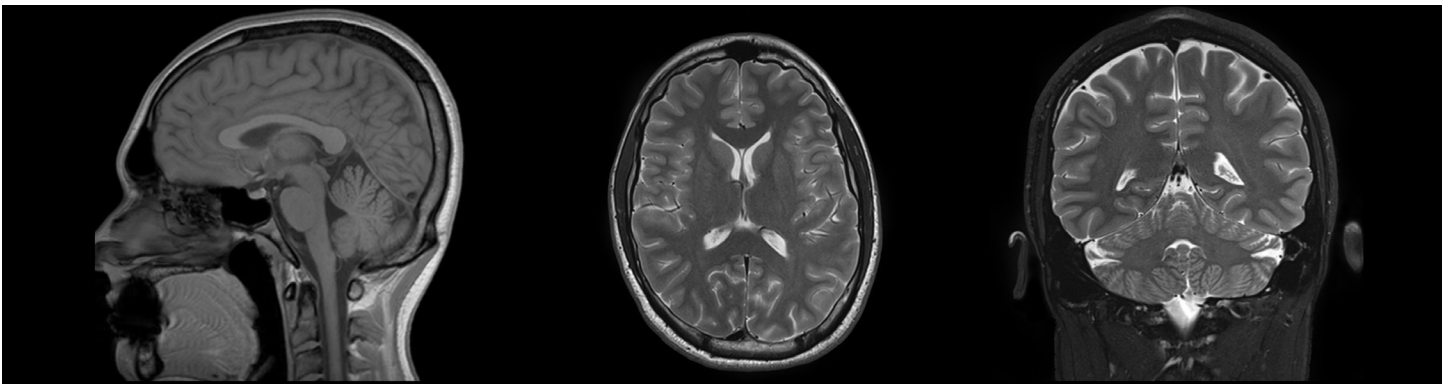
### Encompass™ 15-Channel Head Coil

The adjustable geometry, 15-Channel Coil allows the user to locate the coil elements close to the patient's anatomy to provide excellent signal-to-noise ratio and image quality across the entire cranium, whether used independently or with Encompass MR SRS Immobilization System.



Patent(s) Pending

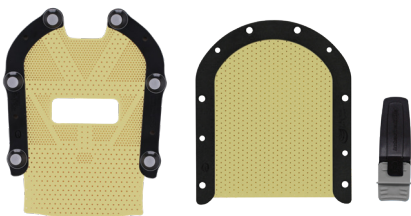
**RT-5200-01**  
Encompass 15-Channel  
Head Coil



### Optimized for use with the Encompass MR SRS Immobilization System

The Encompass 15-Channel Head Coil is specially designed to accommodate the high precision positioning unique to the Encompass MR SRS Immobilization System.

Immobilization in the Encompass SRS System offers motion reduction for increased visualization of fine details, reducing the need for repeated scans. MR images obtained with the Encompass SRS System can be used for SRS treatment planning, including MR-Only and MR Fusion Techniques.

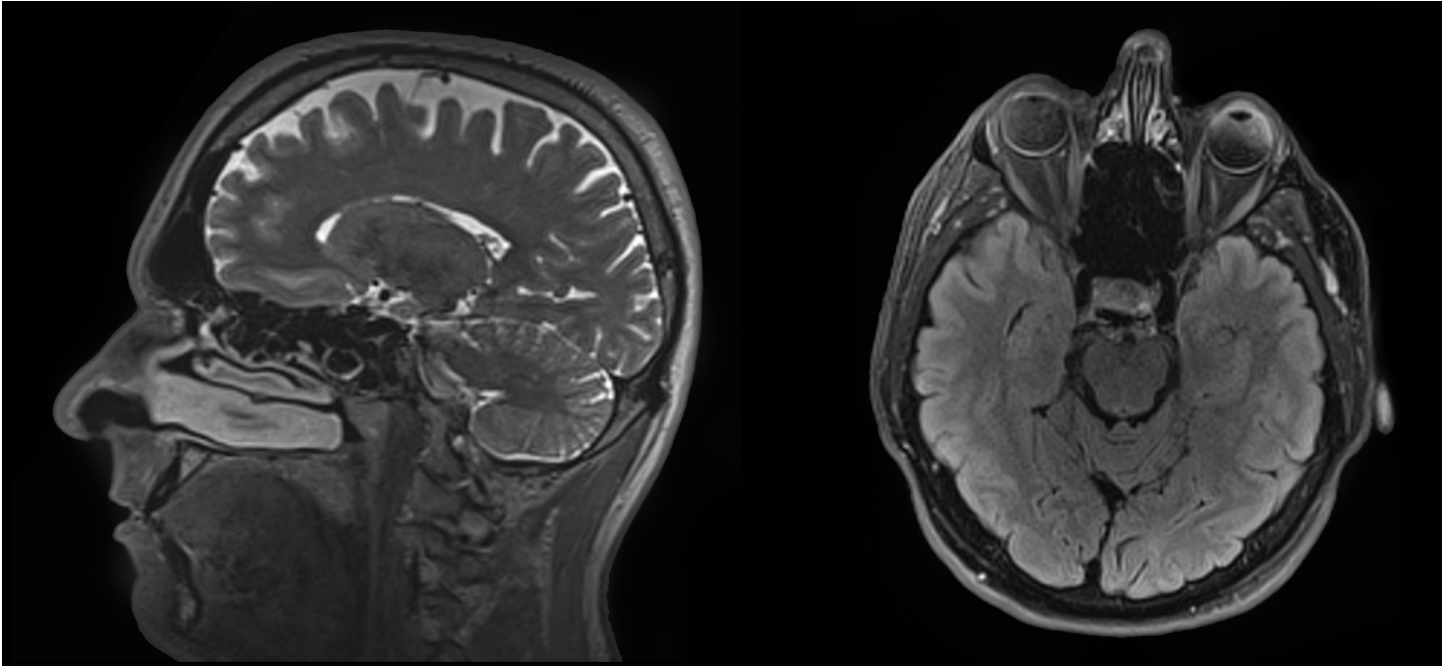


**RT-B889KYCF2**  
Encompass SRS Fibreplast®  
System with Optional  
IntegraBite™

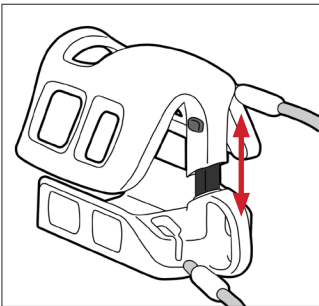


**RT-4600-01-MRI**  
Encompass SRS MR  
Stand Alone Device

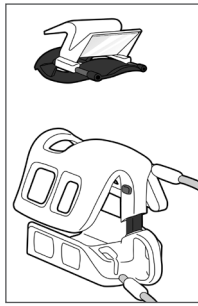
# Offers excellent homogeneity and image quality across the entire cranium



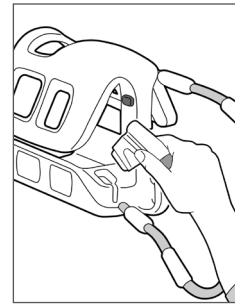
## Additional Features:



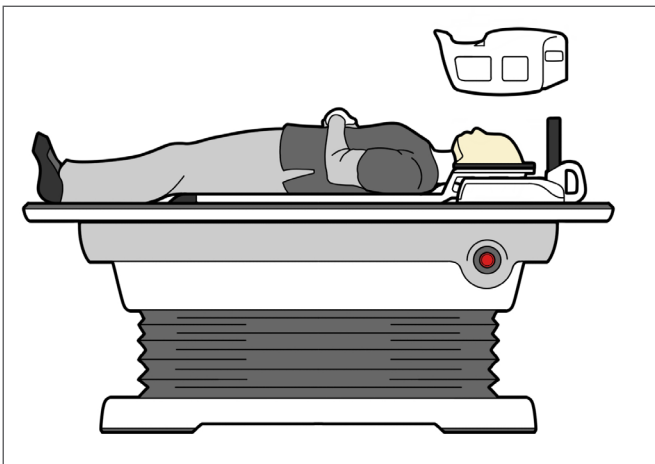
Easy access to the patient with quick-release button on removable top coil.



Patient viewing window and mirror holder help reduce patient anxiety



Onboard cable management for easy and neat storage



Encompass 15-Channel Head Coil can be brought to and set up around an immobilized patient enabling efficient workflows.

Top and bottom coil can be independently used as 7 and 8 channel coils or used as a system in a 15-channel coil set, depending on clinical needs.

<b>RT-5200-01</b>	Encompass 15-Channel Head Coil
<b>RT-4600-01-MRI</b>	Encompass SRS MR Stand Alone Device
<b>RT-B889KYCF2</b>	Encompass SRS Fibreplast System with Optional IntegraBite

2008457\_EN\_B

This brochure contains information about products which may or may not be available in particular countries. Each country has specific laws and regulations governing the commercialization of medical devices and the communication of information regarding medical devices in printed and digital media. Products appearing in this brochure or on our website may or may not have received approval, clearance, or marketing authorization by a governmental regulatory body in any particular country, or may have received approval, clearance, or marketing authorization for different indications and restrictions in different countries, or may be for investigational use only. A product's appearance in this brochure should not be construed as a solicitation or promotion for said product, nor any indication which is not authorized by the laws and regulations of the country where the reader resides.

© 2021 All rights reserved. Qfix and Fibreplast are registered trademarks of Qfix. Encompass and IntegraBite are trademarks of Qfix. Siemens is a registered trademark of Siemens AG.



Qfix  
Avondale, PA  
+1 610.268.0585  
sales@Qfix.com  
www.Qfix.com